



MCS-MAGNUM-10.1

Description & Specifications



Specifications

Magnum Controller

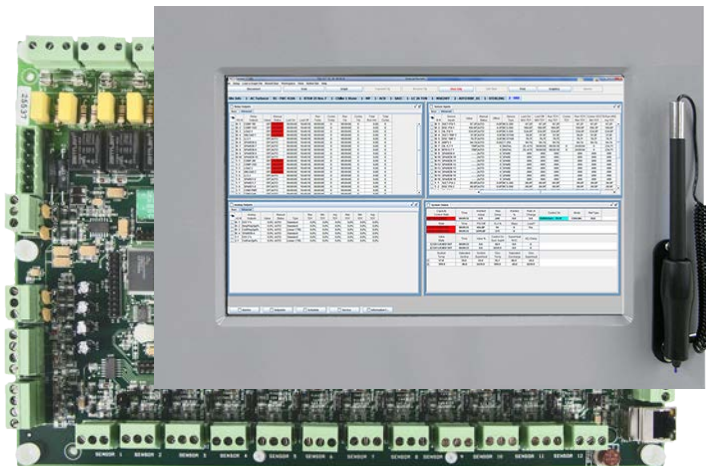
- Dimensions.....12.0"w, 8.0"h, 2.0"d
- Mounting Holes.....Mounts on a backplane utilizing 8 through-hole studs
- Operating Temperature -40°F to +158°F (-40°C to +70°C)
- Operating Humidity.....0-95% Non-Condensing
- Storage Temperature -40°F to +158°F (-40°C to +70°C)
- Microprocessor.....Zilog eZ80 Acclaim! @ 50mhz
- Sensor Inputs (SI).....12 inputs 0-5vdc (10-bit A/D)
- Digital Inputs.....4 inputs 0 or 5vdc only
- Relay Outputs (RO).....10 outputs 6.3amps @ 230vac
- Analog Outputs (AO).....4 outputs 0-10vdc
- Printed Circuit BoardSix layer with separate power and ground planes
- Input Power (Standard)115 or 230vac ±10% 50/60Hz @ 77°F (25°C) ambient, 20VA max (Voltage is field selectable)
- MCS-I/O Comm Port1 @ 38,400 baud
- RS-485 Comm Port1 @ 19,200 baud
- Ethernet.....10/100 Mbps Ethernet
- Real Time ClockBattery backup
- Power DetectionAutomatic power fail reset

Magnum Controller Option

- 2424vac input power ±10%
50/60Hz @ 77oF (25oC) ambient

Touch Screen 10.1

- Dimensions.....12.204"L x 9.055"W x 3.215"H
- Door Mount.....10.875"L x 7.875" with cutout
10 mount studs thru customers encl.
HT800 Cellular Silicone Gasket
NEMA 4 IP66 rated
- LCD Screen10.1" Diagonal (Aspect Ratio 16:10)
16.2 Million Colors
1280 x 800 Resolution
View Angle 85°U, 85°D, 85°L, 85°R
5-Wire resistive touch w/Stylus pen
White LED Backlight (Min Life 50,000 Hrs)
Luminance Min. 400 cd/m²
- Surface Treatment.....Glare/Anti-Reflection ≤1.5%
Hard-Coating (3H)
- Operating Temperature.....-20°C to +65°C Operating Temperature
- Operating Humidity.....0-95% Non-Condensing
- Storage Temperature.....-25°C to +70°C Storage Temperature
- Power Input12VDC regulated
- Power Output.....12VDC output regulated
- Motherboard-Rev 4.0 Freescale i.MX6 Dual Core 800mhz
2Gb of 512mhz DDR3 RAM memory
16Gb of eMMC Flash memory
10m/100m/1G Ethernet
1 Micro-SD Slots
1 USB On-The-Go (OTG)
2 USB Host 2.0
Real Time Clock (RTC) w/ Battery
LVDS for 15.4" LCD 5-wire touch
3 RS485 communication ports
(max. baud rate 115k)
Mini PCIe Interface



Part # MCS-MAGNUM-10.1

Description

The **MCS-MAGNUM-10.1** consists of a MCS-MAGNUM controller along with a Touchscreen 10.1 in display. The **MCS-TOUCH-10.1** is a new touchscreen interface designed to simplify user access with the **MCS-MAGNUM** utilizing **MCS-CONNECT** to provide both graphics and service mode access to technicians. Information and graphics on the TOUCH-10.1 are shown on a 10.1" high resolution (1280x800) LCD display with LED backlighting, which will guarantee long-life operation.

The **MCS-TOUCH-10.1** can connect up to 60 MCS controllers and supports RS485 or Ethernet networking.

The MCS-TOUCH-10.1 makes it easy for the user to manage more complex installation diagrams, without losing the overall view of the installation, as well as ensuring that the pages can be browsed in a fast and straight forward manner.

The MCS-MAGNUM is a durable microprocessor based controller designed for the hostile environments in the HVAC/R industry. It is designed to be the primary manager of the package it is controlling. The Magnum provides flexibility with set points and control options that can be selected prior to commissioning a system or when the unit is live and functioning. Displays, alarms and other interfaces are accomplished in a clear and simple language that informs the user as to the status of the controller.

Complementing the Magnum micro controller are a variety of MCS expansion boards.

Kit Content

- 50W Single Output Power Supply
- 115-230 VAC input (+-15%)
- 12 volt protections: Short circuit/ Overload/ Over voltage Cooling by free air convection - Fuse Internal - non-field changeable
- Operating temperature up to 70 °C
- 7ft CAT 5e Crossover Patch Cord, Orange



MCS-MAGNUM-TOUCH 10.1 also ships with MCS-MOUNT KIT which includes 8 #6 sheet metal screws, 5 Standoffs and 1 Lexan Cover.

5580 Enterprise Pkwy., Fort Myers, FL 33905

Office: 239-694-0089 • Fax: 239-694-0031 www.mcscontrols.com